

TALIAFERRO COUNTY

FAMILY CONNECTION

The mission of the Taliaferro County Collaborative is to build a strong county by working together to form a co-operative link between home, school and community.

FINANCIAL

Cash/ Contribution Sources



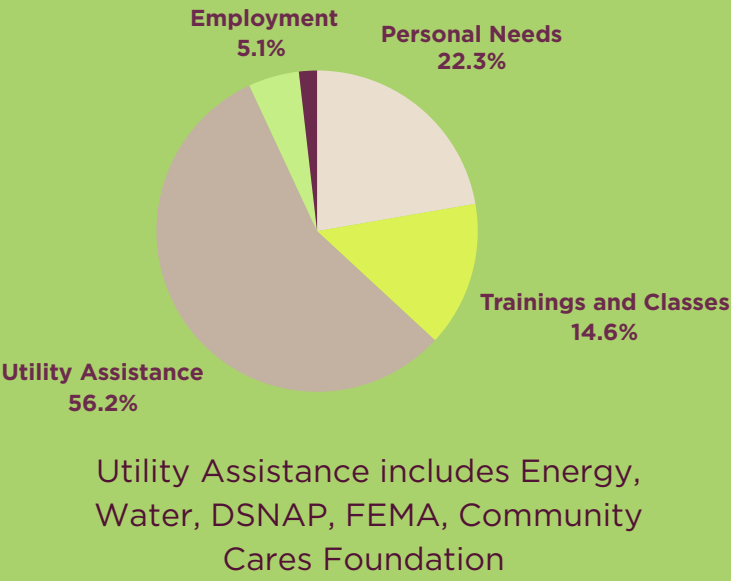
VOLUNTEERS



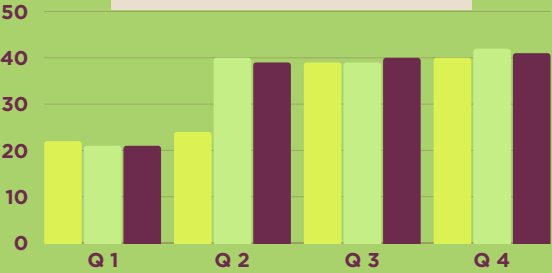
Thank you to our amazing Volunteers that gave **1876** hours of their time to help Taliaferro County.

\$58,606

RESOURCE CENTER
1,193 VISITS

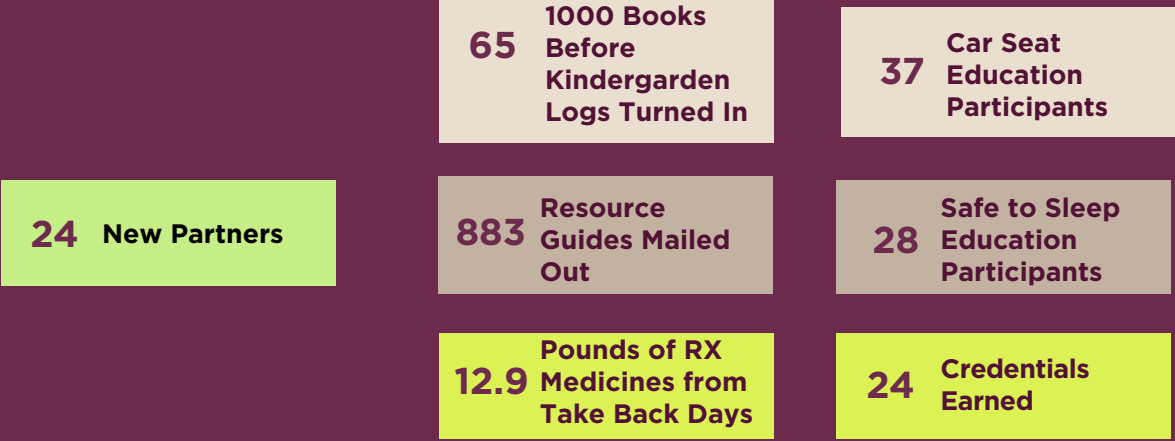


FERST READERS



408 Free books sent home to newborn through 5 years old

BY THE NUMBERS



— TALIAFERRO COUNTY —
family connection™

116 Commerce St.
Crawfordville, GA 30631
706-456-1250

RESILIENT TEENS

Teen Summit

Fall Cohort

Spring Cohort

The road to Resilience for Grades 6th-12th.

STAFF	
MARY EUBANKS; EXECUTIVE DIRECTOR	
SAMANTHA BUTLER; WIOA COORDINATOR	
EXECUTIVE BOARD MEMBERS	
DR. GREGORY RHODES, CHAIR UNIVERSITY OF GEORGIA	
KENYA J. SMITH, VICE CHAIR MANAGER, TALIAFERRO COUNTY HEALTH DEPARTMENT	
ORIGA JONES, SECRETARY SPRINGFIELD BAPTIST CHURCH	
RUBY RANDOLPH, CLERK, TALIAFERRO COUNTY BOARD OF COMMISSIONERS, FISCAL AGENT REPRESENTATIVE	
COLLABORATIVE PARTNER LIST	
TALIAFERRO COUNTY FAMILY CONNECTION	
JULY 1, 2024 - JUNE 30, 2025	
ADVENTURE BAGS, INC	
ADVOCATE DEMOCRAT	
ALEXANDER H. STEPHENS STATE PARK	
AMERIGROUP	
ATHENS TECHNICAL COLLEGE	
AUGUSTA PARTNERSHIP FOR CHILDREN	
AVITA COMMUNITY PARTNERS	
BARTRAM TRAIL REGIONAL LIBRARY	
BOSWELL BAPTIST CHURCH	
BREAST & CERVICAL CANCER, GA DEPT. OF PUBLIC HEALTH	
CENTRAL EAST GEORGIA BLACK CHAMBER OF COMMERCE	
CHILD ENRICHMENT	
CHILD OCCUPANT SAFETY PROJECT, GA DEPT. OF PUBLIC HEALTH	
CITY OF CRAWFORDVILLE	
CITY OF SHARON	
COMMUNITY HEALTH CARE SYSTEM	
COMMUNITY VOLUNTEERS	
CRAWFORDVILLE BAPTIST CHURCH	
CSRA COMMUNITY FOUNDATION	
CSRA REGIONAL COMMISSION	
CSRA RESA	
CSRA, EOA, INC.	
EAST CENTRAL GEORGIA HOUSING AUTHORITY	
F & M BANK	
FERST READERS INC.	
FIRST BAPTIST CHURCH OF WHITE PLAINS	
FORTSONIA BAPTIST CHURCH	
FRIENDSHIP BAPTIST CHURCH	
FRIENDSHIP CME	
GA DEPARTMENT OF PUBLIC HEALTH	
GA FAMILY CONNECTION PARTNERSHIP	
GA LEGAL SERVICES PROGRAM	
GEORGIA HOSPICE CARE	
GEORGIA POWER COMPANY	
GEORGIA PREVENTION PROJECT	
GREATER LEVEL HILL BAPTIST CHURCH	
HALL PRODUCE	
JOIN HANDS OUTREACH	
KINSHIP NAVIGATOR	
LAKE OCONEE AREA OF DELTA SIMA THETA INC	
MARGARET’S GROVE BAPTIST CHURCH	
NEVILLE PATIENT ADVOCACY GROUP, INC.	
NORTHSIDE DRIVE BAPTIST CHURCH	
OFFICE OF WORKFORCE DEVELOPMENT	
DEPT. OF PUBLIC HEALTH IMPACT (HIV, AIDS)	
PARENT VOLUNTEERS	
PEACEFUL PURPOSE HOSPICE	
PRESTON HARPE MEDICAL RESERVE CORPS	
RESILIENT COMMUNITIES OF EAST GEORGIA	
SAFE HOUSE MINISTRIES	
SAFE INFANT SLEEP & BULLYING PREVENTION, GA DEPT. OF PUBLIC HEALTH	
SALVATION ARMY	
SENATOR MAX BURNS	
SENATOR RAPHAEL WARNOCK’S OFFICE	
SPRINGFIELD BAPTIST CHURCH FOOD PANTRY	
SUNSHINE HOUSE	
TALIAFERRO COUNTY BOARD OF COMMISSIONERS	
TALIAFERRO COUNTY BOARD OF EDUCATION	
TALIAFERRO COUNTY BOARD OF REGISTRARS	
TALIAFERRO COUNTY CLERK OF COURT’S OFFICE	
TALIAFERRO COUNTY DIVISION OF FAMILY AND CHILDREN SERVICES	
TALIAFERRO COUNTY FARM BUREAU	
TALIAFERRO COUNTY FIRE DEPARTMENT	
TALIAFERRO COUNTY HEALTH DEPARTMENT	
TALIAFERRO COUNTY LIBRARY	
TALIAFERRO COUNTY PROBATE JUDGE’S OFFICE	
TALIAFERRO COUNTY REPUBLICAN PARTY	
TALIAFERRO COUNTY SCHOOL	
TALIAFERRO COUNTY SCHOOL PTA	
TALIAFERRO COUNTY SENIOR PROGRAM	
TALIAFERRO COUNTY SHERIFF’S DEPARTMENT	
TALIAFERRO COUNTY TAX ASSESSORS’ OFFICE	
TALIAFERRO COUNTY TAX COMMISSIONER’S OFFICE	
TALIAFERRO COUNTY TRANSIT	
TALIAFERRO EMERGENCY MANAGEMENT	
THOMSON PROBATION OFFICE	
TOUCHING TALIAFERRO WITH LOVE	
TREY RHODES, DISTRICT 124 REPRESENTATIVE	
UGA EXTENSION	
WARREN COUNTY POP WARNER	
WILKES COUNTY HEALTH DEPARTMENT	
WORKSOURCE GEORGIA	
YOUTH VOLUNTEERS	